



WORLD WIDE WEAVE

Metal mesh, the unknown problem solver

GKD: Excellent response, great discussions

GKD – GEBR. KUFFERATH AG was delighted with its latest appearance at the 'Techtextil' event in Frankfurt. Both the visitor frequency and the quality of discussions held at the leading international trade fair for technical textiles and nonwovens surpassed previous fairs. Visitors showed particular interest in GKD's weaving expertise. The wide range of wire mesh types and material combinations on show offered users interesting alternatives to existing solutions. This expertise was impressively demonstrated with 'Texteel', an innovative hybrid mesh made of stainless steel and carpet fibers that was developed in cooperation with the carpet manufacturer ANKER. Its metallic shimmer shows that mesh designs incorporating metal can lend a product properties which secure an advantage in the market.

As global market leader in developing high-performance mesh made of metal and other industrially weavable materials for specific applications, GKD is always open to new approaches. The company therefore sees 'Techtextil' as the ideal forum for inspiring lateral thinkers to create new solutions with metal mesh. Indeed, the large number of wire mesh types and weaving-based options offered by GKD once again allowed numerous manufacturers and processors of textile products to tap previously unimagined optimization potential this year. Precisely adjustable properties such as grip, pore size or multifunctionalities make the tailor-made wire mesh a long sought-after problem solver for many applications. It extends the application or performance limits of products and thereby contributes to improving overall process efficiency.



WORLD WIDE WEAVE

Massive potential for hybrid mesh

The 'Texteel' hybrid mesh made of Perlon Rips carded yarn from ANKER, which GKD combined with stainless steel, served as a shining example of this weaving expertise. The warp and weft of this mesh, which was able to deliver its full visual impact on both the floor and wall of the trade fair stand, are made of stainless steel. In the weft wire, this material was combined with carded yarn spun from polyamide fibers. The result is a wire mesh that combines a new look and feel with functional properties such as strength and shielding from electromagnetic radiation. The ability to combine tried and tested materials with metal wire motivated numerous visitors to seek dialogue with the weaving specialist and discuss specific implementations for various applications.

Holistic expertise

The use of metal mesh as a substitute for textile components which are for example used in composite materials also aroused the interest of visitors. Indeed, many of these had never even considered metal as an alternative. Whether for components or acoustically effective insulation materials, for shielding, as woven guards or pre-filtration elements for air filter components or as a functional component for protective clothing: the scope of intensively discussed applications once again underlined the massive and diverse potential that GKD is developing for manufacturers with metal mesh constructions and weaving technology. The successful trade fair appearance was rounded off with excellent feedback on GKD's holistic expertise with filter media, screens and conveyor belts for exacting spunbond production. The company's broad solution expertise was reflected in the quality of the discussions. This is borne out by the fact that various options discussed during the Techtextil event have already led to concrete requests from customers.

3.578 characters incl. spaces



WORLD WIDE WEAVE

GKD – GEBR. KUFFERATH AG

The owner-run technical weaver GKD – GEBR. KUFFERATH AG is the global market leader for metal and plastic woven solutions as well as transparent media facades. Under the umbrella of GKD the company combines four independent business units: Industrial meshes, Process belt meshes, Architectural meshes and Transparent media façades. With its six plants – including the headquarters in Germany and other facilities in the US, South Africa, China, India and Chile – as well as its branches in France, Great Britain, Spain, Dubai, Qatar and worldwide representatives, GKD is never far from its customers.

For more information:

GKD – GEBR. KUFFERATH AG
Metallweberstraße 46
D-52353 Düren
Tel.: +49 (0) 2421 / 803-0
Fax: +49 (0) 2421 / 803-233
E-mail: solidweave@gkd.de
www.gkd.de

Please send a reprint to:

impetus.PR
Ursula Herrling-Tusch
Charlottenburger Allee 27-29
D-52068 Aachen
Tel.: +49 (0) 241 / 189 25-10
Fax: +49 (0) 241 / 189 25-29
E-mail: herrling-tusch@impetus-pr.de

Metal mesh, the unknown problem solver

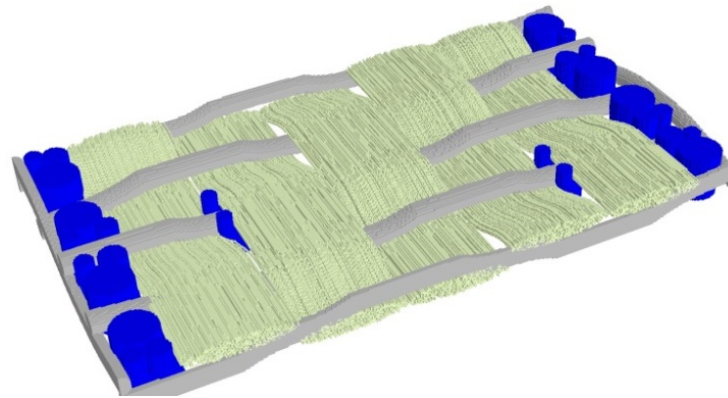
GKD: Excellent response, great discussions



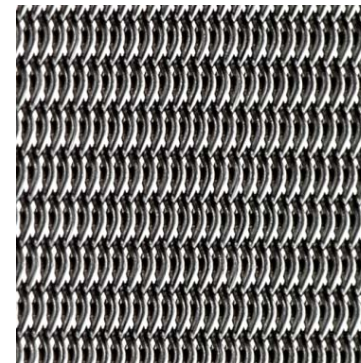
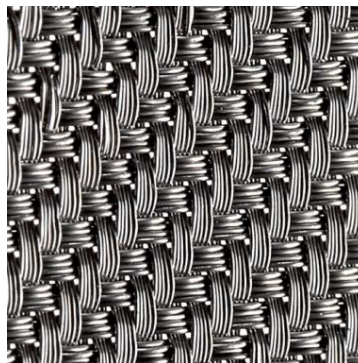
WORLD WIDE WEAVE



Picture 1: At the Techtextil, visitors showed particular interest in the hybrid mesh Texteel by GKD, which was developed in cooperation with the carpet manufacturer ANKER.



Picture 2: The innovative hybrid mesh Texteel made of stainless steel shows the wide range of wire mesh types and material combinations of GKD.



Picture 3-4: Precisely adjustable properties such as grip, pore size or multifunctionalities make the tailor-made wire mesh a long sought-after problem solver for many applications.

Picture 1-2 © GKD

Picture 3-4 © GKD/Power und Radach

We will be happy to send you the desired images in printable resolution by e-mail.

These images are meant exclusively for use in connection with this particular press release on the company GKD. Any other use beyond this expressed purpose, especially use in connection with other companies, is strictly prohibited

impetus.PR

Agentur für Corporate Communications GmbH

Ursula Herrling-Tusch
Charlottenburger Allee 27-29
D-52068 Aachen
Tel: +49 [0] 241 / 1 89 25-10
Fax: +49 [0] 241 / 1 89 25-29
E-Mail: herrling-tusch@impetus-pr.de