



WORLD WIDE WEAVE

## **Turbo-dewatering on the belt press**

GKD presents a new mesh type at the IFAT 2016

**At the world's leading trade fair for environmental technology, the IFAT 2016 in Munich, GKD – GEBR. KUFFERATH AG, the internationally leading specialist for filtration and process belt meshes, will once again be exhibiting an attractive range of innovative products. From 30 May to 3 June, the owner-managed technical mill will be demonstrating its all-round solutions competence for all kinds of wastewater and process water treatments to an international audience of experts in the field. The exhibits will include intelligent innovations for cost-effective dewatering and drying of sewage sludge, and ultrafine meshes for micro-screening water treatment. But the particular highlights in the process belt sector at the GKD stand (No. 318 in Hall A2) will be the new filter belt type "Speed-Drain" with its unprecedented dewatering efficiency, and the wear indicator integrated into a new standard GKD mesh type. The climax of GKD's presence at the IFAT will be a prize draw for a filter belt set consisting of an upper and lower belt equipped with the new wear indicator.**

One of the most important processes in sewage sludge treatment is the mechanical dewatering stage. The efficiency of this process has a massive influence on the resource and energy consumption of downstream treatment stages and thus on the economic efficiency of the treatment process as a whole. With "Speed-Drain", GKD proudly presents a new filter belt type that combines the properties of a highly efficient pre-dewatering press belt with those of a robust filter belt mesh. This is made possible by warp wires of various special plastic materials which – compared to the monofilaments of conventional standard meshes – are only half as thick and yet still capable of



WORLD WIDE WEAVE

withstanding enormous pressures. In this way, the specific mesh construction, which has considerably more but smaller mesh openings, significantly increases the dewatering performance without forfeiting any of the reliability of its particle retention rate. The result is a considerably higher dry matter content (DM) in the dewatered sludge. The new type of filter belt has already demonstrated its excellent dewatering capabilities and its process reliability – even in the case of problematic sludges – in a range of wastewater treatment plants in Germany and Austria. The Pfliegelberg Sewage Treatment Plant in Wangen, for example, compared the efficiency of the speed drain mesh type with that of a standard mesh in a ten-week trial. The two belt types ran parallel to each other under exactly the same conditions in two structurally identical belt presses with daily sampling of results. Michael Sturm, the plant manager, confirms that from the very start the new belt type was significantly more efficient. "Our high expectations were completely fulfilled. The higher DM content and the reduced particle penetration in direct comparison are compelling arguments for the belt from the Speed-Drain range of products." And the high dewatering efficiency offers not only attractive prospects for sewage plant managers; but also diverse optimisation potential for equipment manufacturers.

### **Mesh with a wear indicator**

GKD offers another advance in process reliability with its new standard mesh type 1003 with an integrated wear indicator. Contrast-coloured interior wires are a reliable indicator for mechanical abrasion. They provide early warning of progressive wear due to defective equipment components or process-related attrition. This helps to avoid damage to the belt and unplanned stoppages with expensive production downtimes to be avoided. All IFAT visitors who leave their business cards at GKD's stand will take part in a draw for a set of 1003 type mesh belts with the new wear indicator.



WORLD WIDE WEAVE

### **Eight-metre-wide dryer belts**

The range of products featured at the IFAT will be rounded off with GKD's wide-format low temperature dryer belts. Made of a variety of materials and in sizes of up to eight metres wide, they ensure that sewage sludge is dried with a maximum of cost-effectiveness, resource conservation and environmental protection. The process belt experts supply all dryer belts with GKD's exclusive PAD seam. This extremely flat seam sets an unprecedented standard in belt seam technology. The improved durability, stability and easy handling of these seams, which can be printed on in four colours, make them a guarantee for zero seam problems when scrapers or sludge rakes are used.

**Visit GKD – GEBR. KUFFERATH AG at the IFAT 2016  
Messe München  
Hall A2  
Stand 318**

4,602 characters incl. spaces

### **GKD – GEBR. KUFFERATH AG**

The owner-run technical weaver GKD – GEBR. KUFFERATH AG is the global market leader for metal and plastic woven solutions. Under the umbrella of GKD – WORLD WIDE WEAVE the company combines four independent business units: SOLID WEAVE (industrial meshes), WEAVE IN MOTION (process belt meshes), CREATIVE WEAVE (architectural meshes) and COMPACT FILTRATION (compact filter systems). With its seven plants – including the headquarters in Germany and other facilities in the US, Great Britain, South Africa, China, India and Chile – as well as its branches in



WORLD WIDE WEAVE

France, Spain, Dubai, Qatar and worldwide representatives, GKD is never far from its customers.

**For more information:**

GKD – GEBR. KUFFERATH AG  
Metallweberstraße 46  
D-52353 Düren  
Tel.: +49 (0) 2421 / 803-0  
Fax: +49 (0) 2421 / 803-227  
E-Mail: [weaveinmotion@gkd.de](mailto:weaveinmotion@gkd.de)  
[www.gkd.de](http://www.gkd.de)

**Please send a reprint to:**

impetus.PR  
Ursula Herrling-Tusch  
Charlottenburger Allee 27-29  
D-52068 Aachen  
Tel.: +49 (0) 241 / 189 25-10  
Fax: +49 (0) 241 / 189 25-29  
E-mail: [herrling-tusch@impetus-pr.de](mailto:herrling-tusch@impetus-pr.de)

## Turbo-dewatering on the belt press

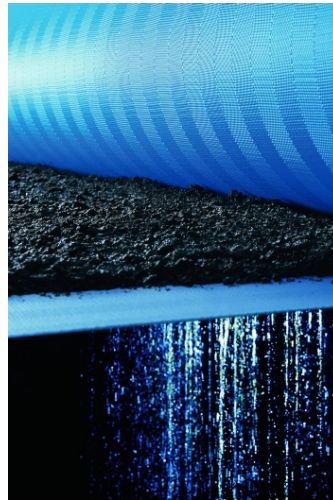
GKD presents a new mesh type at the IFAT 2016



WORLD WIDE WEAVE



Picture 1: With Speed-Drain, GKD proudly presents a new filter belt type that combines the properties of a highly efficient pre-dewatering press belt with those of a robust filter belt mesh.

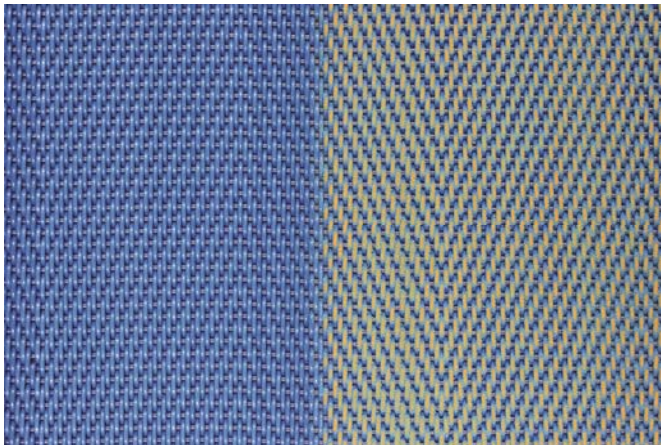


Picture 2: The new type of filter belt Speed-Drain has already demonstrated its excellent dewatering capabilities and its process reliability in a range of wastewater treatment plants.

Picture 1-4 © GKD

We will be happy to send you the desired images in printable resolution by e-mail.

These images are meant exclusively for use in connection with this particular press release on the company GKD. Any other use beyond this expressed purpose, especially use in connection with other companies, is strictly prohibited.



Picture 3: GKD offers an advance in process reliability with its new standard mesh type 1003 with an integrated wear indicator.



Picture 4: More reliability for dryer belts because of GKD's exclusive PAD seam.

### impetus.PR

Agentur für Corporate Communications GmbH

Ursula Herrling-Tusch  
Charlottenburger Allee 27-29  
D-52068 Aachen

Tel: +49 [0] 241 / 1 89 25-10

Fax: +49 [0] 241 / 1 89 25-29

E-Mail: herrling-tusch@impetus-pr.de